

# PROVIDING CENTRALIZED MANAGEMENT AND DATA INSIGHTS ACROSS YOUR TENABLE.SC DEPLOYMENT

## OVERVIEW

Some of the largest and most complex security programs around the world depend on Tenable.sc to protect against rising threats. Many times, because of the sheer size, or the geographic distribution of their networks, they require multiple Tenable.sc consoles to ensure their networks are fully covered. Larger deployments require many scanners, multiple scan zones, reporting and scanning consoles. This lack of consolidation makes it difficult for enterprise security teams to grasp the full picture across their Tenable deployments.

With Tenable.sc Director, you now have a unified view across your large, and often dispersed deployment. Providing centralized management and data insights, Tenable.sc Director puts more data at your fingertips to ensure complete visibility, regardless of the amount of consoles you have. With Tenable.sc Director, data aggregation and analysis across consoles is done automatically, giving you a comprehensive view for management and administration.

## VALUE

Tenable.sc Director provides the ability to:

- Unified view to manage all of your Tenable.sc instances from one central location and reduce management overhead
- Increased visibility and consolidation of Tenable.sc data from a single view
- Reduced complexity with centralized management of Tenable.sc consoles and scanners with the ability to view and perform key management tasks across all Tenable.sc Instances
- Report on all Tenable.sc Consoles
- Available as an add-on to Tenable.sc or Tenable.sc CV for customers with multiple consoles

## USE CASES

Organizations that have multiple consoles and scanners due to:

- Geographical distribution of business units (Tenable.sc Consoles)
- Logical separation of business units
- Compliance requirements (separation of duties/data)
- Approaching over 100K IPs or Large Scale Deployment

## KEY BENEFITS

- Gain visibility across all Tenable.sc consoles and scanners
- Utilize reporting and dashboards for your deployment
- Improve operations & maintenance across your Tenable.sc environments

## ABOUT TENABLE

Tenable®, Inc. is the Cyber Exposure company. Over 30,000 organizations around the globe rely on Tenable to understand and reduce cyber risk. As the creator of Nessus®, Tenable extended its expertise in vulnerabilities to deliver the world's first platform to see and secure any digital asset on any computing platform. Tenable customers include more than 50 percent of the Fortune 500, more than 30 percent of the Global 2000 and large government agencies. Learn more at [www.tenable.com](http://www.tenable.com).

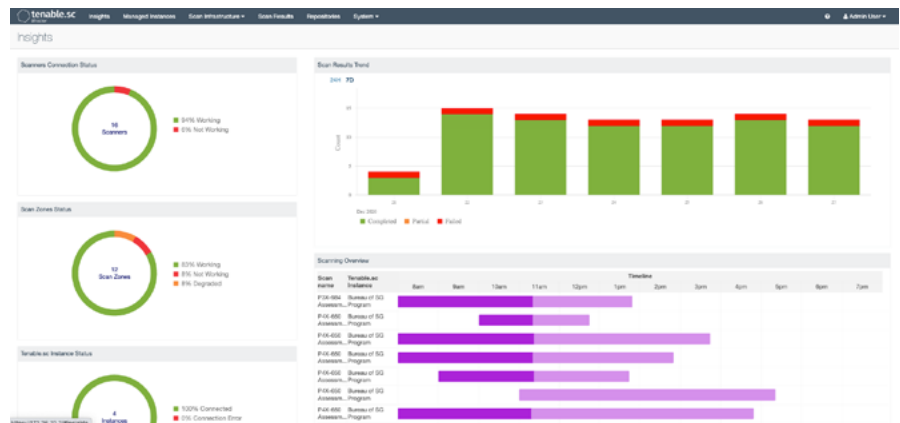
# FEATURES

You can manage the following from Tenable.sc Director:

- Add, edit, and delete Nessus scanners and scan zones on managed Tenable.sc instances. For more information, see [Nessus Scanners](#) and [Scan Zones](#).
- Pause, resume, or stop scans that are running on managed Tenable.sc instances, as described in [Pause, Resume, or Stop Scans on a Managed Tenable.sc Instance](#).
- Add and delete Scans via an API, including the ability to attach Policies, Credentials and Repositories to that scan.

You can monitor the following details from Tenable.sc Director:

- The status, version, and total number of [Nessus Scanners](#) running on each managed Tenable.sc instance
- The [Scan Zones](#) configured on each managed Tenable.sc instance
- The [Scan Results](#) of scans run on each managed Tenable.sc instance
- A summary of plugin sets used on each managed Tenable.sc instance
- A summary of plugin sets used by Nessus scanners on each managed Tenable.sc instance
- The version of Tenable.sc running on each managed Tenable.sc instance



The diagram shows an aggregated view of an organization's Tenable.sc console data including Scanners Connection Status, Scan Zone Status and even different trends. Administrators are able to filter and drill down to see different areas for more granular data.

For More Information: Please visit [tenable.com](http://tenable.com)

Contact Us: Please email us at [sales@tenable.com](mailto:sales@tenable.com) or visit [tenable.com/contact](http://tenable.com/contact)

